

All stories relating to Yannick Bisson

THE GOODS

HOMES

Great Spaces: transforming an East York bungalow into a series of welcoming cubes

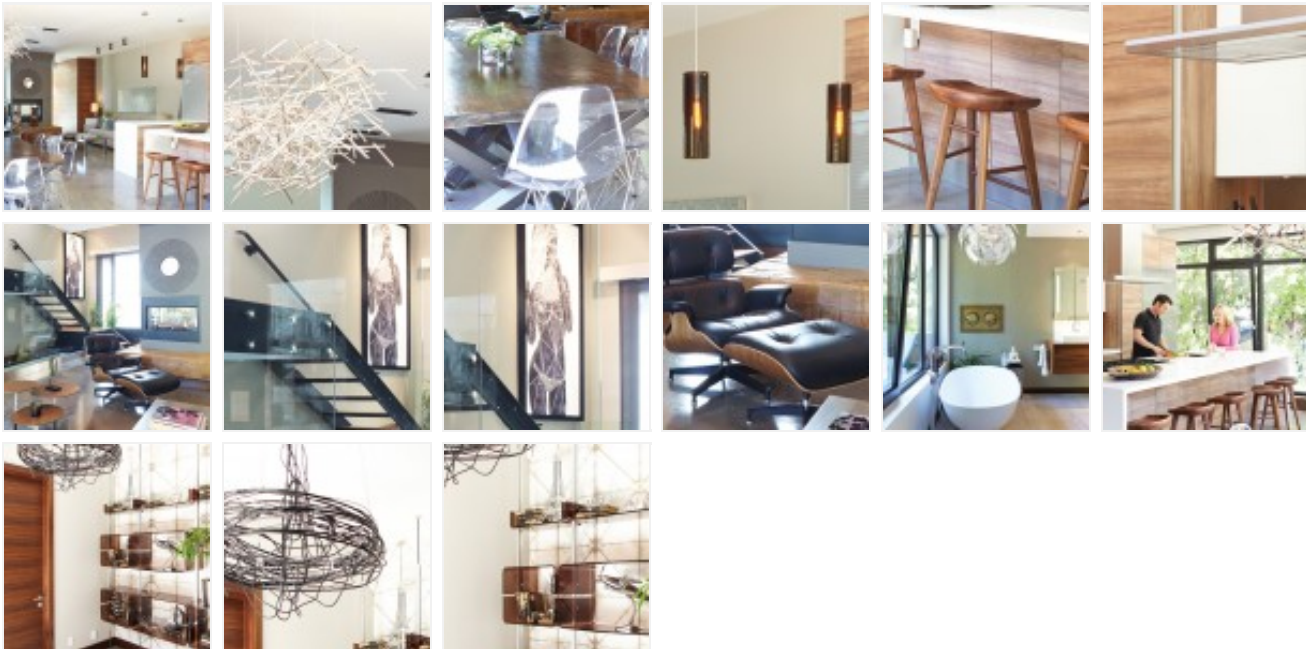
An actor and a TV writer create a dramatic turning point for their mid-century bungalow

By Bert Archer | Photographs by Kristin Sjaarda



Before **Yannick** and **Shantelle Bisson** moved into their three-bedroom East York bungalow in 2007, Shantelle was a freelance writer, and Yannick was a gigging actor booking the occasional movie of the week. With three daughters to support, Yannick would often turn to contracting to help pay the bills. The couple's luck changed that year when Yannick landed the lead role on CBC's popular detective series *Murdoch Mysteries*. A few years later, feeling squeezed for space (and a little more flush), the Bissons went hunting for a bigger house, setting their sights on Rosedale. But the more they looked, the more they realized how much they loved their little cul-de-sac overlooking the Taylor Creek ravine and wanted to stay put. They hired the architect Gordon Ridgely who, along with Upside Developments, transformed their bungalow into a series of interlocking cubes. - Yannick pitched in, too: he crafted the fireside bench out of pine beams salvaged from a 200-year-old barn used

on his show. In more ways than one, this is the house that *Murdoch* built.



January 2, 2014 | 9:57 am

[1 Comment](#)

Most Popular Most Recent

[Breaking Brian Shin: portrait of a Bay Street master and suburban drug dealer](#)

[Sale of the Week: for better or for worse, this \\$659,000 penthouse is a sign of Kensington Market's gentrification](#)

[Saks is getting a billion-dollar makeover—just in time for its Toronto debut](#)

[Winterlicious 2014: Toronto Life's 65 best bets for this year's fest](#)

[Real Estate Cheat Sheet: will house and condo prices ever fall?](#)

© 2014. All Rights reserved. Reproduction in whole or in part strictly prohibited. *Toronto Life* is a registered trademark of Toronto Life Publishing Company Limited